



metrics

PLCs for Grant Success

August 8th, 2024

METRICS Center

www.metricscenter.org



Jump in the chat
and tell us where
you're joining from!



Welcome!

Thank you for joining us
today to learn more about
METRICS and our PLC
opportunities!

We are so happy you're here!



Meet the Coaches



Stacey Brewer
West + Southeast



Telah Brown
Southeast



Tara Schluesche
Northeast + Central



Maureen Stewart
Northeast



Anne Zaslofsky
Central + West



Today

OBJECTIVES

- Grantees will learn how the METRICS team uses multi-tiered systems of support to provide technical assistance.
- Grantees will join the METRICS team and sign up to participate in PLCs.

AGENDA

- | | |
|------------------------|--------------------------------|
| 01 Overview | 02 About METRICS |
| 03 Who We Serve | 04 Technical Assistance |
| 05 METRICS PLC | 06 Next Steps |





Parking Lot

Have a question? Add it to the chat!





Overview

The **Mental health Evaluation, Training, Research, and Innovation Center for Schools (METRICS)** goal is to provide the knowledge and resources needed to expand and diversify the school mental health workforce.



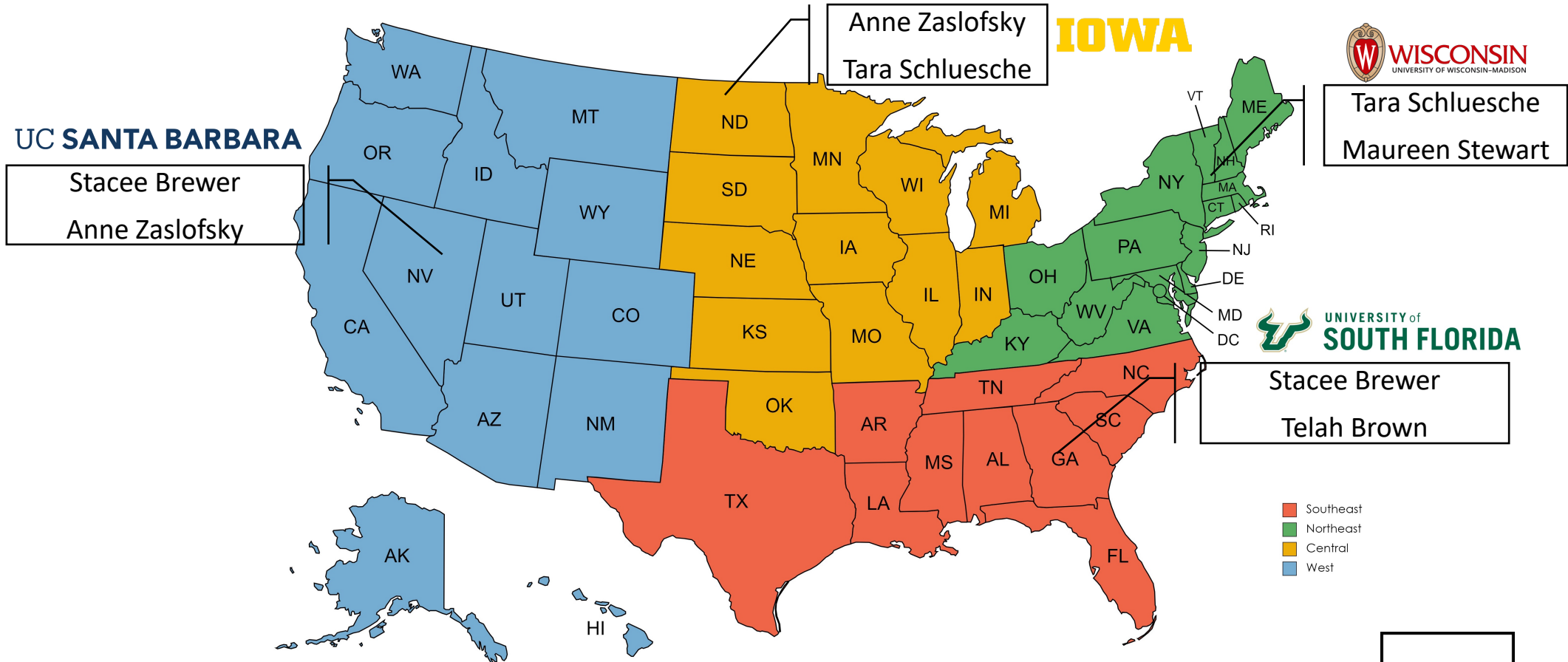


Organizational Structure

METRICS represents a network of existing school mental health research and technical assistance centers that includes the **School Mental Health Collaborative (SMHC)** and the **Scanlan Center for School Mental Health (SCSMH)**.



METRICS Regions



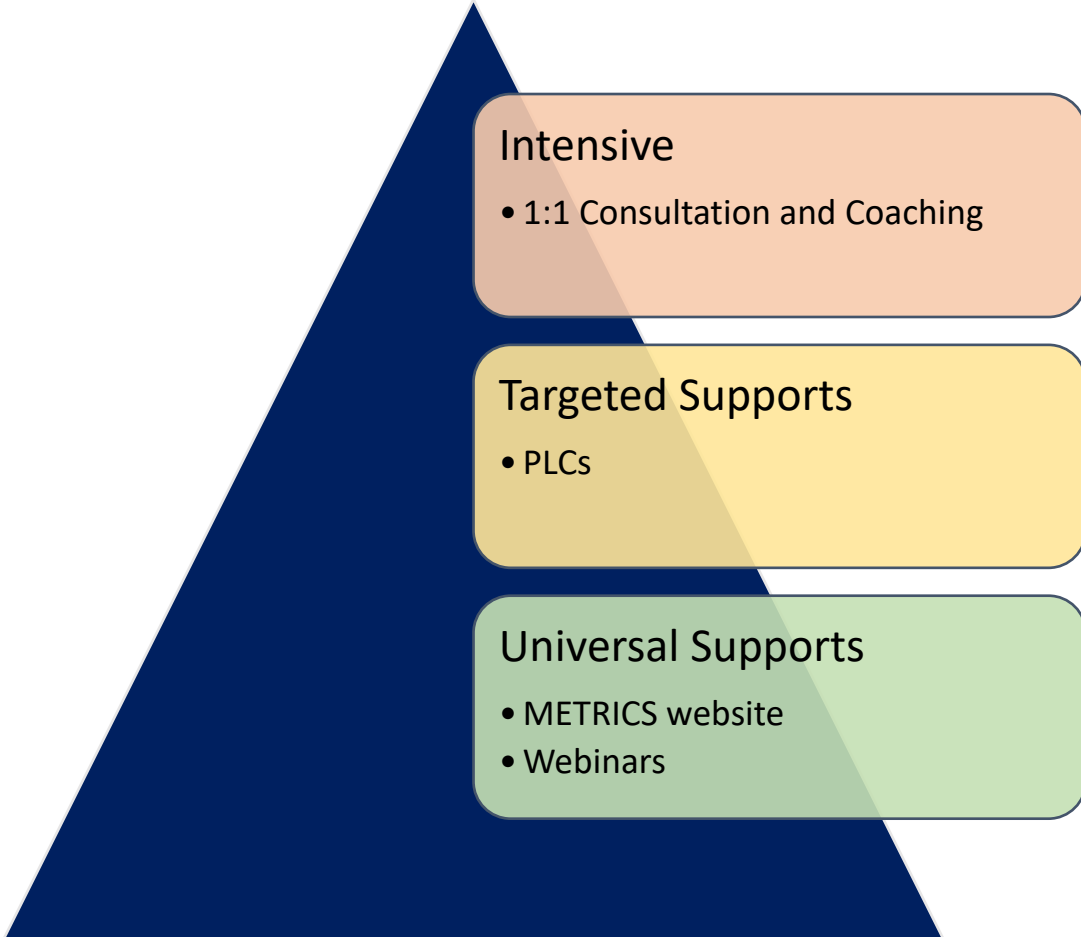
METRICS Regions





METRICS Supports

We provide **technical assistance** within multi-tiered systems of support. Examples include:



Intensive

- 1:1 Consultation and Coaching

Targeted Supports

- PLCs

Universal Supports

- METRICS website
- Webinars



METRICS website (www.metricscenter.org)



About us

Events

Resources

Support

Recruiting, training, and retaining

METRICS provides support to states, districts, and schools with the goal of increasing students' access to highly qualified mental health professionals in their schools.



METRICS Supports

We provide **technical assistance** within a multi-tiered system of support. Examples include:

Intensive

- 1:1 Consultation and Coaching

Targeted Supports

- PLCs
- Communication with grantees

Universal Supports

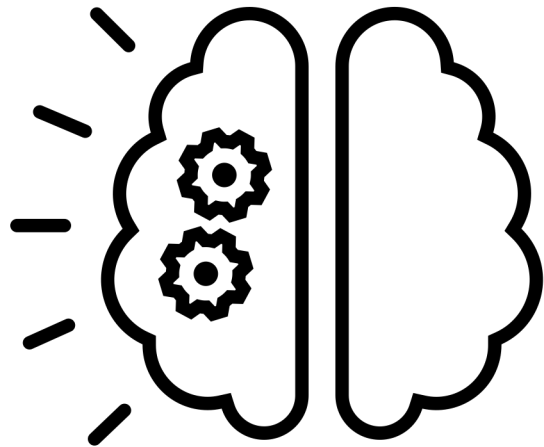
- METRICS website
- Webinars

Today we will talk primarily about PLCs. Though they are situated within Tier 2, **all grantees are encouraged to participate!**





METRICS Supports | Getting started



What do you **already know** about professional learning communities (PLCs)?

What **experiences** have you had?





METRICS Supports | Getting started



What do you **want to know**
about METRICS PLCs?

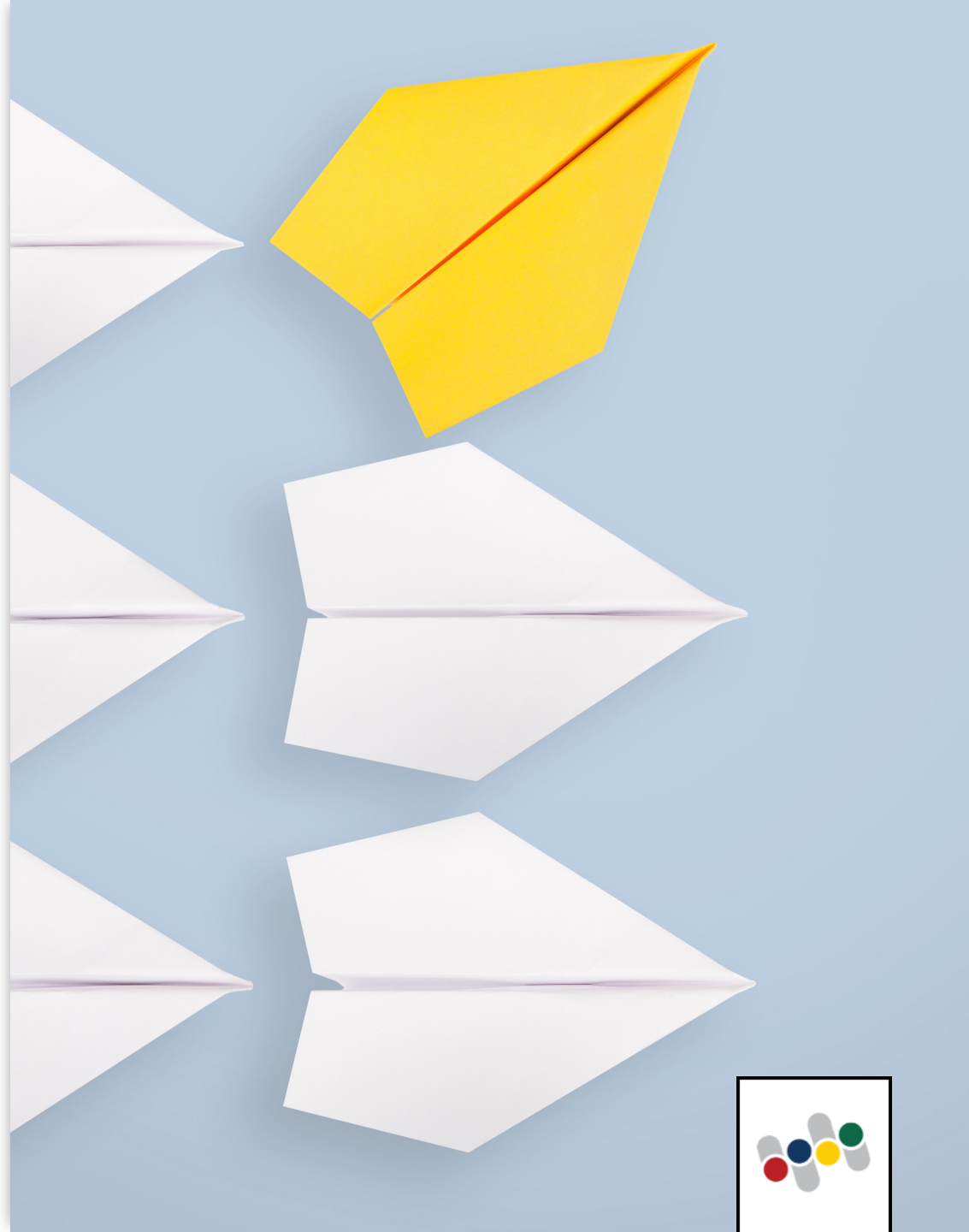
What **questions** do you have?



METRICS PLC | What are they?

METRICS PLCs

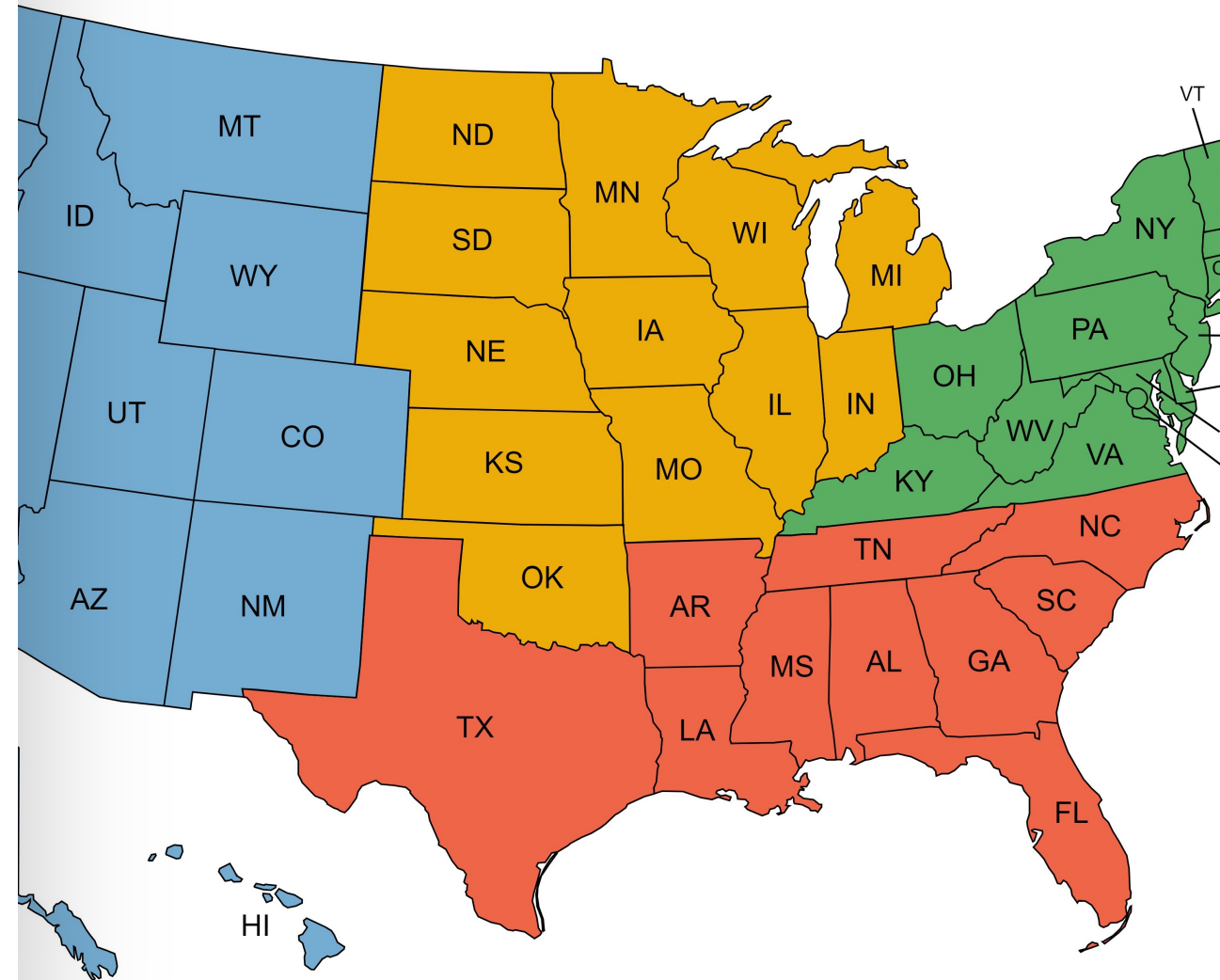
- ✓ Align with grant objectives
- ✓ Promote collaborative inquiry
- ✓ Use data to answer questions with
 - discussion protocols
 - learning resources that are evidence-based
 - best practices
 - policy-aligned
- ✓ **This structure facilitates members' review, sharing, and implementation of research-based techniques to expand their professional expertise.**



METRICS PLC | Why participate?

METRICS PLCs

- ✓ Connect you with other grantees
- ✓ Promote conditions for success
- ✓ Expand support offered to grantees
- ✓ Support grantees by highlighting lessons learned and best practices from their project



METRICS PLC | Coaches' Role

METRICS Coaches

- establish norms
- review objectives
- assign roles
- take attendance
- facilitate discussions
- organize resources
- determine topics
- host PLC meetings
- support grantee efforts



Example

OBJECTIVE

Grantees will collaborate to share expertise in recruiting, training, and retaining mental health professionals in schools and implement best practices to facilitate grant success.

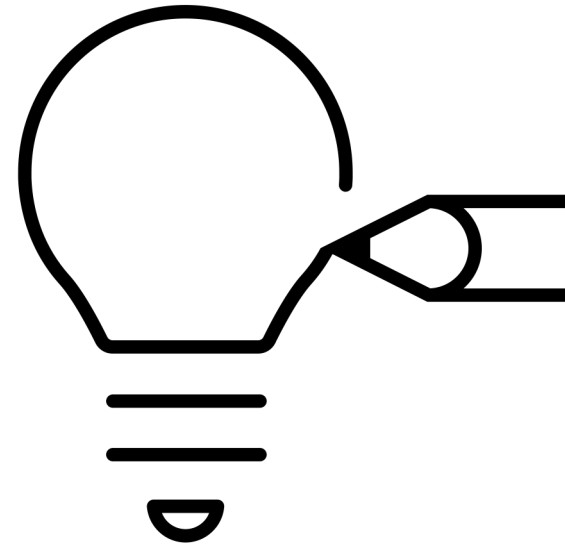
AGENDA

- 01** Begin with an end in mind
- 02** Successes
- 03** Regional Topic
- 04** Discussion Protocol
- 05** Requests for Assistance
- 06** Next Steps



Example PLC Topics

- Advocacy
- Retention
- Recruitment
- Supervision
- Scope of Practice
- Professional Development
- Relationship building
- Multi-tiered System of Support
- Annual Progress Reports (APRs)
- Resources for students + parents/families
- Training Standards
- Sustainability



METRICS PLCs | Group Norms

Be helpful, reliable, honest, and fair

Assume positive intent

We aim to create a positive, productive work culture.

Engage as fully as possible

Be collaborative





Discussion Protocol | Peeling the Onion

Purpose

To provide a structured way to engage in problem solving for issues related to grant support.

Process (40 mins)

1. Speaker presents focus question (5 mins)
2. Team asks clarifying questions (5 mins)
3. Team responds to **prompts**, speaker silently takes notes (15 mins)
4. Speaker reviews notes and reflects aloud (5 mins)
5. Open conversation - Now what? Next steps (5 mins)
6. Process debrief – Peeling the Onion (5 mins)





Discussion Protocol | Peeling the Onion

Prompts

“What I heard the presenter say is...”

“One thing I assume to be true about the problem is...”

“A question this raises for me is...”

“Further questions this raises for me are...”

“What if...?”

“Have we thought about...?”

”I wonder...”



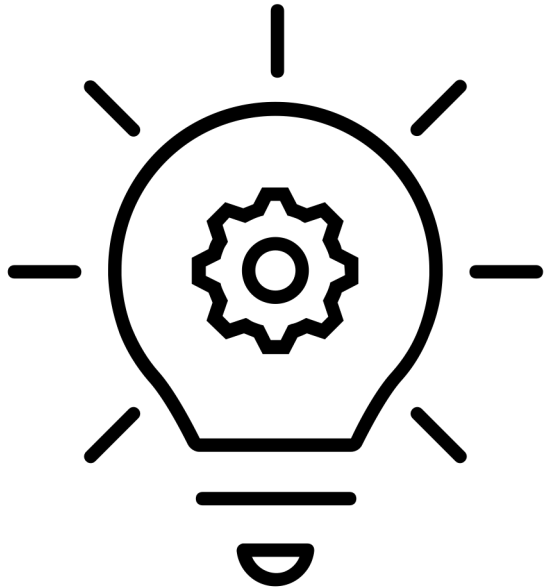
Monitoring & Evaluating PLCs

- PLCs will meet at least once each month
- Meetings may evolve over time depending on the needs of participants





METRICS Supports | Wrapping up



What did you **learn** about METRICS PLCs?

What questions do you have now?

Jot it down; we'll share in a moment!



Breakout Groups



Stacey Brewer
West + Southeast



Telah Brown
Southeast



Tara Schluesche
Northeast + Central



Maureen Stewart
Northeast



Anne Zaslofsky
Central + West



WHAT'S NEXT?

- Sign up for a METRICS PLC!
- Connect with your coaches!
 - **West**
 - Anne
 - Stacey
 - **Central**
 - Anne
 - Tara
 - **Northeast**
 - Maureen
 - Tara
 - **Southeast**
 - Stacey
 - Telah



<https://tinyurl.com/mpewj5vy>



THANK YOU!

How did we do?

- We want to hear from you!
- Please share your feedback about today's session.
- Have an outstanding question or need?
Fill out a TA request!

<https://www.metricscenter.org/support>



<https://tinyurl.com/38j8u2jf>

